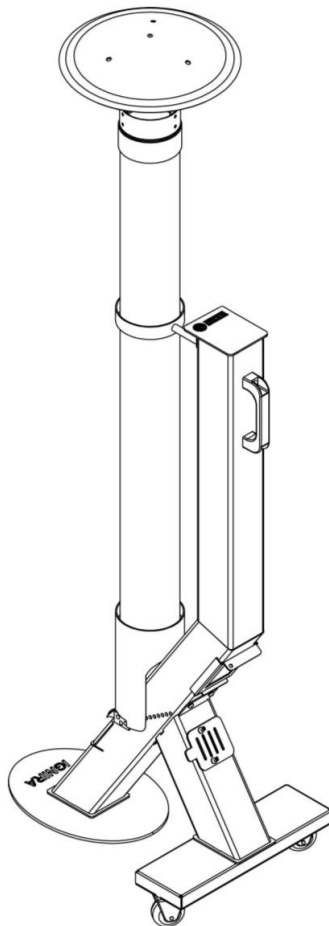
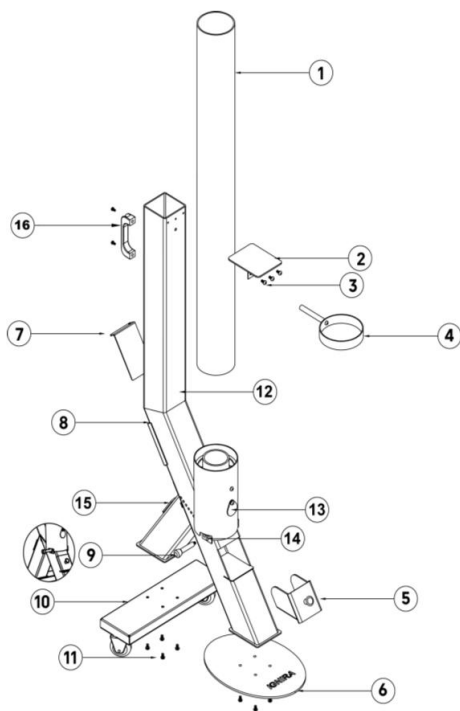
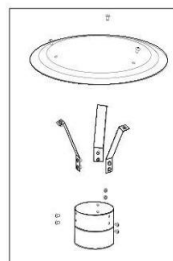


# INSTRUCTION OF PATIO HEATER

## IGNIRA



## Description, Assembly and Usage:



Description		
No.	Name	QTY
①	Glass tube	1pc
②	Hopper cover	1pc
③	M5 Screws	3pc
④	Hoop	1pc
⑤	Ash tray	1pc
⑥	Base +4pcs Screws	1pc
⑦	Clean the fuel port plate	1pc
⑧	Clean the fuel port	1pc
⑨	Clean ash handle	1pc
⑩	Wheel bracket + 4pcs wheel	1set
⑪	M6 Screws	4pc
⑫	Main Body	1pc
⑬	Fire port	1pc
⑭	Ash Cleaner	1pc
⑮	Air adjust port	1pc
⑯	Handle	1set
⑰	Rain cap as optional	1set

### Assembly and Usage:

1. Put the base in a flat & firm place.
2. Use 4pcs M6 screws to fix the main body to the base.
3. Fixed the hoop on the main body with 1pc M6 screw.
4. Use 4pcs screws to fix the ⑤ support frame to the heater body first , and then fix the Wheel bracket.
5. Fix the rain cap with 12pcs M5 screws if has Rain cap as optional.
6. Put some pellet into the hopper.
7. Close the hopper cover and ignite with an gas gun from ignition port⑬ . The ignition time should last about 1-2 minutes.
8. Clean ashes after a period of use with, properly tools.
9. Pull ash clean handle left and right (←→) to clean and drop ashes to ash tray.



### Warning :

- 1.Keep away from combustibile & flammable materials while using.
- 2.Beware of scalding.
- 3.Handle with care.
- 4.Lock the wheels before using.

Assembly:

